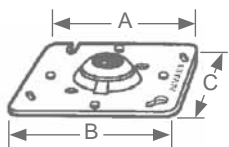


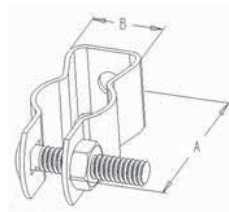
TRADE SIZE	HALEX PART #	CTN/CASE QTY	CTN/CASE WT (LBS)	DIMENSIONS (IN INCHES)		
				A	B	C
1 LB. SLUG	79910B	50	50	4.125	4.125	0.075
5 LB. SLUG	79950B	10	50	4.188	4.188	0.081

APPLICATION: INDOORS OR OUTDOORS. Use to seal around junction boxes, flashings, and service entrance locations. **FEATURES:** Service Temperature Range: -30°F - 100°F; Compound is pliable and noncorrosive to metals; Compound can be painted.



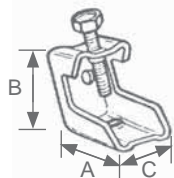
TRADE SIZE	HALEX PART #	CTN/CASE QTY	CTN/CASE WT (LBS)	DIMENSIONS (IN INCHES)		
				A	B	C
Fixture Hangers						
FITS 3 1/4 OR 4" OCTAGONAL OUTLET BOXES						
	69588B	25	4.1	4.125	4.125	0.075
FITS 4" SQUARE OUTLET BOXES						
	69699B	25	5	4.188	4.188	0.081

APPLICATION: INDOORS OR OUTDOORS. Use to secure and suspend light fixture. **FEATURES:** Self-aligning covers provide flexible suspension, assuring plumb alignment, regardless of ceiling structure or angle. Equipped with ball joint, allows fixture to swivel through an angle of 20° in any direction. **MATERIAL:** Stamped steel.



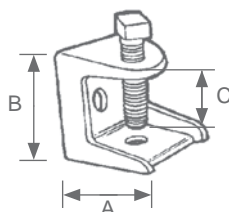
TRADE SIZE	HALEX PART #	CTN/CASE QTY	CTN/CASE WT (LBS)	DIMENSIONS (IN INCHES)			
				A	B	HW	TW
Conduit Hangers							
<i>WITH NUT AND BOLT ATTACHED</i>							
0	67800B	100	7	1.875	0.750	3/8"-1/2"	1/2"
1	67810B	100	9	2.125	0.750	3/4"	3/4"
2	67820B	100	10	2.437	0.875	1"	1"
2 1/2	67825	15	1.7	2.750	0.875		1 1/4"
3	67830B	100	10	2.875	0.875	1 1/4"	1 1/2"
4	67840B	100	16	3.125	1.000	1 1/2"	
5	67850B	50	10	3.875	1.000	2"	2"
6	67860B	50	17	4.625	1.250	2 1/2"	2 1/2"
7	67870B	50	19.5	5.500	1.250	3"	3"
8	67880B	25	10.25	5.750	1.250	3 1/2"	3 1/2"
9	67890B	10	5.5	6.250	1.250	4"	4"

APPLICATION: INDOORS OR OUTDOORS. Use to secure and suspend conduit from overhead supports. **MATERIAL:** Zinc plated steel. **CERTIFICATIONS:** TO UL AND CSA REQUIREMENTS.



TRADE SIZE	HALEX PART #	CTN/CASE QTY	CTN/CASE WT (LBS)	DIMENSIONS (IN INCHES)		
				A	B	C
Beam Clamps						
1/4-20	65600B	25/250	3.3/33	1.5	1.5	1.0

APPLICATION: INDOORS OR OUTDOORS. Use to secure conduit to a metal beam. Clamps on beam, girder or similar structure to provide a mounting base for attachment of a conduit hanger, either directly or by means of a threaded rod. Eliminates the need to drill a hole through the beam. **FEATURES:** Maximum 100 lbs. load bearing.



TRADE SIZE	HALEX PART #	CTN/CASE QTY	CTN/CASE WT (LBS)	DIMENSIONS (IN INCHES)		
				A	B	C
Beam Clamps						
Malleable Iron						
1"- 1/4-20	35600B	25/250	5/50	2.10	1.73	0.85
2"- 3/8-16	35610B	10	7	1.9375	1.75	0.875

APPLICATION: INDOORS OR OUTDOORS. Use to secure conduit to a metal beam. Clamps on beam, girder or similar structure to provide a mounting base for attachment of a conduit hanger, either directly or by means of a threaded rod. Eliminates the need to drill a hole through the beam.

